

AFRICAN/GORILLA TREKING ADVENTURE - 2015



Good day and hope this finds you well. Are you ready for an adventure; a once in a lifetime trip? Continue reading!!!

Here is the preliminary schedule for the 2015 Gorilla Trek adventure.

Considering that 75% of “bucket list” trips are African in nature, this one will top the charts. These are what are called “life enlightenment” experiences. Trips/adventures that change perspectives and enlighten the senses. I hope you will join us in late October/early November 2015 for this incredible chance to visit the, less than 850, gorillas living in the Uganda and Rwanda jungles of Africa.

There will be a webinar that you will be invited to participate in after July 4th, 2014 (TBD). Here, you will have a chance to listen to my colleague, Jane Behrend, share her experiences with this itinerary. There will be an opportunity for Q&A after her presentation to help you understand the dynamics of this fascinating opportunity. Emails will be sent out to those responding to me with interest in this journey.

Also, you will find an optional Tanzania safari that will take place at the end of the Gorilla Trek. It is an “option only” for those who care to continue the short distance to Tanzania and enjoy an additional 7 night safari adventure.



AFRICAN/GORILLA TREKING ADVENTURE - 2015

- ❖ October 22, 2015 (TBD) – depart USA
 - Day One – Arrive Entebbe (Uganda) and met by Premier Safaris representative with assistance with customs
 - Proceed to Boma Guest House – overnight
 - Day Two – Meet guide and fly to Queen Elizabeth National Park
 - Meet Premier Safaris guide and proceed to lodge
 - Enjoy afternoon/evening game drive
 - Mweya Safari Lodge – overnight
 - Day Three – Lion Research, Water safari & night game drive
 - An Early morning drive to Kasenyi with researchers with in-depth description in the research of lion prides; lion trekking
 - After lunch, enjoy a unique boat cruise on Kazinga Channel and Lake Edward watching for the large concentration of animals at the water's edge – great platform for photography & bird watching
 - Tonight you will enjoy a “bush” dinner overlooking the beautiful park and later, a night game drive
 - Mweya Safari Lodge – overnight



- Day Four – Chimpanzee Tracking & Evening game drive
 - After breakfast, transfer to Kyambura Gorge for the spectacular sunrise of the rift valley
 - You will be guided down the Kyambura River Gorge to spend the allowed one (1) hour with the chimps as they go about their daily life (the terrain is steep but the views are amazing
 - You will return to the lodge for lunch and rest
 - You will go on an evening game drive along Kasenyi track and Queens Mile in the park keeping watch for lion, elephant, leopard, hyena, mongoose, waterbuck, Uganda kob, and many other smaller animals and birds
 - Mweya Safari Lodge – overnight
- Day Five – You’re on the Move!! Bwindi Impenetrable Forest
 - After breakfast, start for Bwindi – this is a four (4) hour drive through some of the most beautiful varieties of animals, fauna and famous for its tree climbing lions
 - After arrival at the lodge, rest and relax or take the opportunity to take a village walk and visit local craft shops, schools, etc.
 - This evening be entertained by the local community/orphan group
 - Silverback Lodge – overnight
- Day Six – Gorilla Tracking
 - You will enter early in the morning the spectacular gorilla sanctuary with its heavily vegetated rainforest which crisscrosses allowing access for trekkers
 - The time and terrain varies according to the location of these fantastic apes
 - The gorillas are shy and peaceful animals and will leave you with a lifetime of unforgettable experiences; the thrill of spending time with and photographing these rare gentle giants as they go about their time, is truly moving
 - ☹ have to leave them and spend your afternoon talking about your experiences back at the lodge
 - Silverback Lodge – overnight
- Day Seven – Moving again! Parc des Volcans – Rwanda
 - An early start for Rwanda with stops along the way for sites of the volcanoes; these great, old volcanoes tower almost 15,000 feet and covered with rich, green rainforest fauna
 - Gorilla Nest Ranch (Jack Hanna ranch) – overnight
- Day Eight – Gorilla Tracking in Parc des Volcans

- Early morning transfer to park headquarters for your gorilla briefing with park staff
- You will trek through the foothills of the Virungas which can be muddy and challenging but well worth the efforts
- Spend an hour with these gentle beasts and then head back down the slopes taking in great vistas through the canopy gaps to magnificent peaks
- Gorilla Nest Ranch (Jack Hanna ranch) – overnight
- Day Nine – Kigali
 - After breakfast, transfer to Kigali, an approximately three (3) hour drive
 - Enjoy lunch at local restaurant and take city tour which includes the genocide museum and center
 - Kigali Serena Hotel – overnight
- Day Ten – Home or Tanzania Safari
 - Guided transfer to the airport for your flight home or to Kilimanjaro International Airport

✚ PRICING:

- **INCLUDES THE FOLLOWING:**
 - **ACCOMMODATIONS, MOST MEALS AND DRINKS**
 - **INTRA-COUNTRY FLIGHTS**
 - **ENGLISH SPEAKING GUIDES**
 - **PORTERS**
 - **GROUND TRANSPORTATION**
 - **ALL PARK ACTIVITIES**
 - **GORILLA PERMITS AND GOVERNMENT TAXES**
- **NOT INCLUDED:**
 - **INTERNATIONAL FLIGHTS**
 - **VISAS WHERE APPLICABLE**
 - **TRAVEL INSURANCE**
 - **AIRPORT DEPARTURE TAXES**
 - **GRATUITIES**
 - **ANY OTHER COSTS OF PERSONAL NATURE**
 - **OPTIONAL TANZANIA SAFARI (ITINERARY AND PRICING LISTED BELOW)**

✚ PRICE BASED ON 12-14 GUESTS

- **\$6966 PER PERSON**
- **25% DEPOSIT NEEDED TO SECURE PLACE AND GORILLA PERMITS**
- **\$145 PER PERSON FOR DEPOSIT INSURANCE**
 - **ALL FEES ARE SUBJECT TO CHANGE**

EAST AFRICA SAFARI

- ❖ **NOVEMBER 1, 2015 – DAY ONE OF SAFARI; FLIGHT FROM KIGALI TO KILIMANJARO INTERNATIONAL AIRPORT**
 - **MEET AND GREET BY & BEYOND REPRESENTATIVE; HELP WITH LUGGAGE AND VISA REQUIREMENTS**
 - **FLIGHT FROM KILIMANJARO INTERNATIONAL AIRPORT TO SERONERA AIRSTRIP VIA TANGANYIKA FLYING COMPANY**
 - **SERENGETI UNDER CANVAS – OVERNIGHT**
- **DAY TWO & DAY THREE - SERENGETI UNDER CANVAS**
 - **BEDOUIIN STYLE TENT WITH ENSUITE BATHROOM WITH OUTSIDE BUCKET SHOWER; INCLUDES MEALS DAILY, SOFT DRINKS, HOUSE WINES, LOCAL BRAND SPIRITS AND BEER, TEAS, AND COFFEES; SCHEDULE SAFARI ACTIVITIES, REFRESHMENTS ON GAME DRIVES AND LAUNDRY**
- **DAY FOUR**
 - **TRANSFER TO SERONERA AIRSTRIP FOR FLIGHT TO LOBO AIRSTRIP VIA TANGANYIKA FLYING COMPANY FOR KLEIN'S CAMP**
 - **KLEIN'S CAMP – OVERNIGHT**
- **DAY FIVE AND SIX – KLEIN'S CAMP**
 - **INTIMATE COTTAGE WITH ENSUITE BATHROOM WITH SHOWER; INCLUDES SAME AS SERENGETI UNDER CANVAS**
- **DAY SEVEN – DEPART LOBO AIRSTRIP VIA TANGANYIKA FLYING COMPANY FOR FLIGHT TO ARUSHA AIRPORT**
 - **UPON ARRIVAL YOU WILL BE MET BY REPRESENTATIVE OF LEGENDARY LODGE FOR YOUR DAYROOM USE UNTIL 5PM**
 - **AT 5PM, COLLECTED AND TRANSFERRED TO KILIMANJARO INTERNATIONAL AIRPORT FOR DEPARTURE FLIGHT HOME**

PRICING:

- **INCLUDES THE FOLLOWING:**
 - **ACCOMMODATIONS**
 - **ALL MEALS, DRINKS AND LAUNDRY AS SPECIFIED IN ITINERARY**
 - **EMERGENCY MEDICAL EVACUATION INSURANCE**
 - **FLIGHTS/PRIVATE CHARTERS AS SPECIFIED IN ITINERARY**
 - **DOMESTIC/INTERNATIONAL DEPARTURE TAX, FUEL AND SAFETY LEVIES FROM AIRPORTS AND AIRSTRIPS UNLESS OTHERWISE STIPULATED**

- **SCHEDULED TRANSFERS AS SPECIFIED IN ITINERARY**
 - **SCHEDULED SIGHTSEEING AND EXCURSIONS SPECIFIED IN ITINERARY**
 - **SHARED/SCHEDULED GAME VIEWING ACTIVITIES AS SPECIFIED IN ITINERARY**
 - **NATIONAL PARKS AND CONCESSION FEES**
 - **PERSONALIZED TRAVEL JOURNAL (ONE PER COUPLE)**
- **NOT INCLUDED:**
 - **MEALS, DRINKS AND LAUNDRY NOT SPECIFIED IN ITINERARY**
 - **PREMIUM BRAND DRINKS, WINE, CHAMPAGNE, COGNACS, CIGARS**
 - **GRATUITIES AND ANY ITEMS OF PERSONAL NATURE**
 - **SIGHTSEEING AND EXCURSIONS NOT SPECIFIED IN ITINERARY**
 - **FLIGHTS AND TRANSFERS NOT SPECIFIED IN ITINERARY**
 - **NATIONAL PARKS AND CONCESSIONS NOT SPECIFIED IN ITINERARY**
 - **VISA FEES**
 - **ADDITIONAL TRAVEL INSURANCE NOT SPECIFIED IN ITINERARY**

✚ PRICE BASED ON 8 GUESTS -

- **\$5475.60 PER PERSON**
- **25% DEPOSIT**
- **APPROXIMATE \$145 PER PERSON DEPOSIT INSURANCE**
- **APPROXIMATE \$290 PER PERSON FLIGHT KIGALI TO KILIMANJARO INTERNATIONAL AIRPORT**
 - **ALL FEES AND SCHEDULES ARE SUBJECT TO CHANGE**
 - **THIS SAFARI CAN BE TWEAKED TO ACCOMMODATE MORE GUESTS**

I know there are a lot of questions and more information will be forthcoming once we have a solid group interested in the journey. Please contact me if you are interested, as you can see there is limited space for the Gorilla portion of this trip. If you are only interested in Safari, let's talk separately as this can be customized to your wants and needs.

Thank you for your interest and I look forward to hearing from you soon.

All the best -

Candace Andreozzi, ACC
Travel Advisor

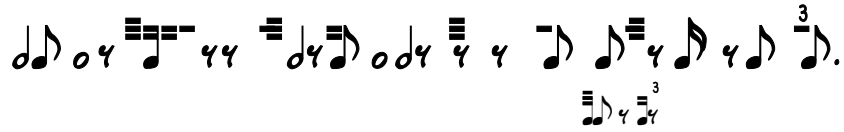
Post Haste Travel
954 966-7690
561 306-6798 (Cell)



VIRTUOSO.
SPECIALISTS IN THE ART OF TRAVEL

SAVEUR
TRAVEL ADVISORY BOARD

"Silversea Cruises Advisor Team Specialist"



www.posthastetravel.com